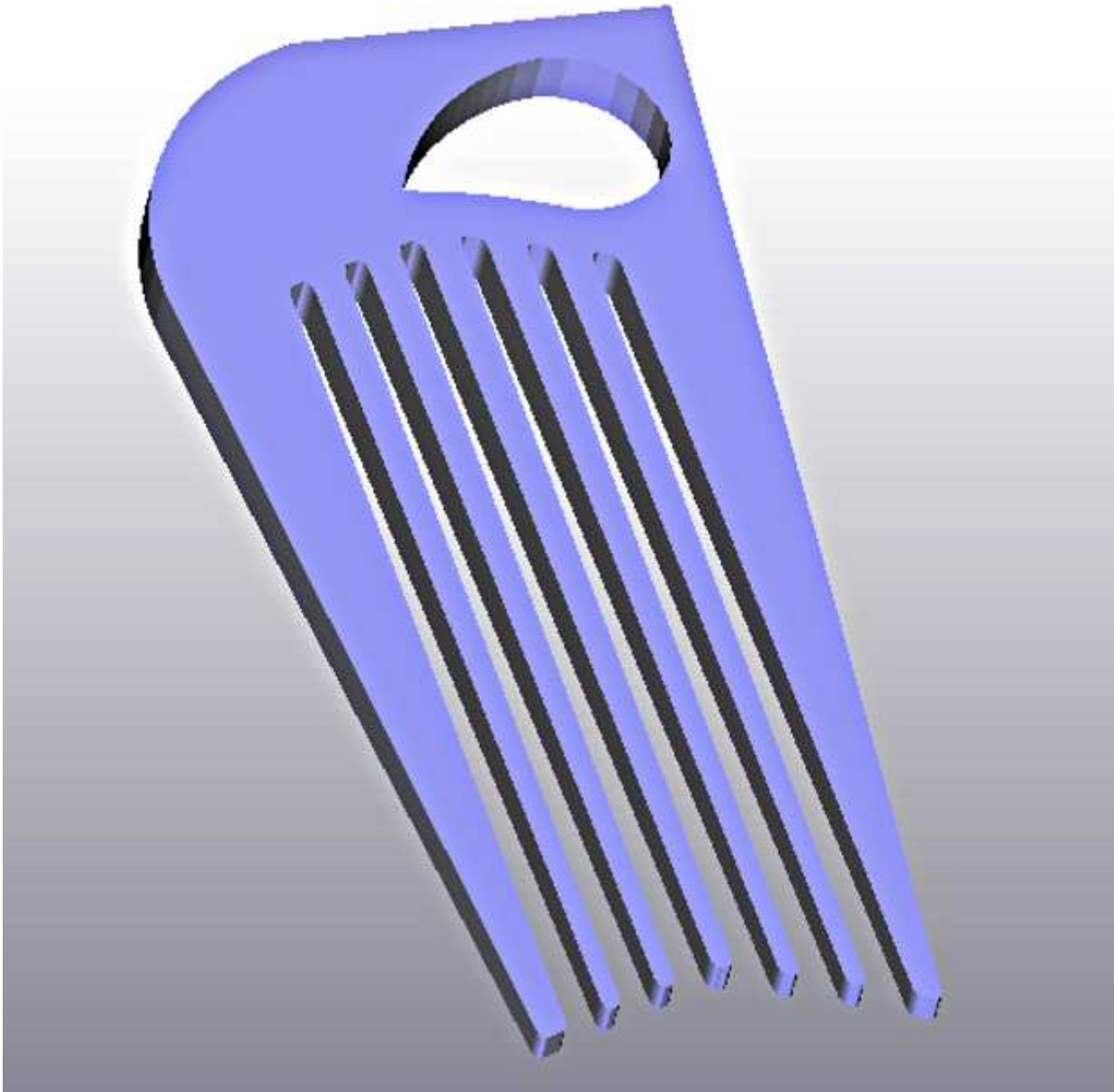


Peigne chignon :





Generate GCode

Table: 80°

Temps: 2h46mn

Use Raft/Support

Use support material

Use default start/end gcode

Use Print-O-Matic (stepper extruders only)

Settings

Plastic

Extruder

Defaults

Object infill (%)

Layer Height (mm)

Number of shells:

Feedrate (mm/s)

Travel Feedrate

Print temperature